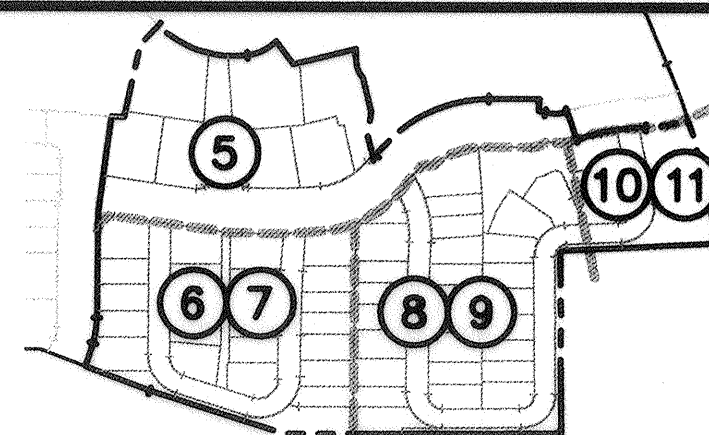
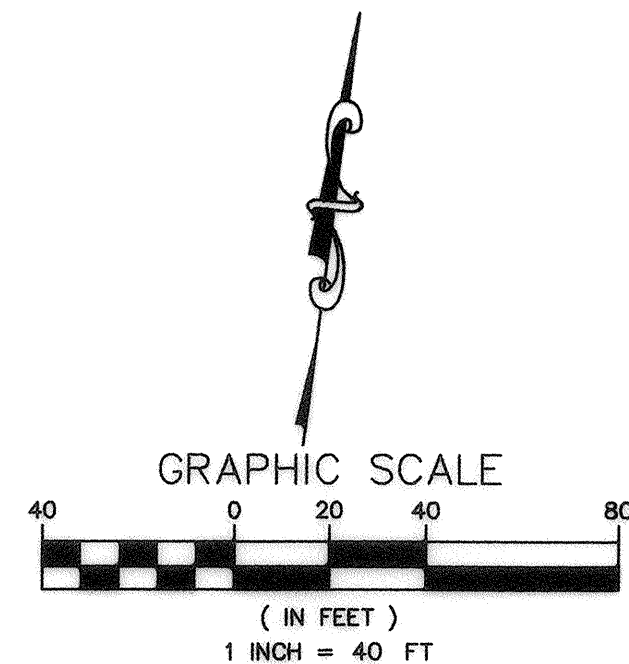


CURVE TABLE			
CURVE #	RADIUS	DELTA	LENGTH
C1	20.96'	47°54'25"	17.53'
C2	5.00'	45°21'52"	3.96'
C3	60.50'	6°27'13"	6.81'
C4	39.50'	32°56'28"	22.71'
C5	227.00'	18°34'11"	73.57'
C6	110.00'	23°21'43"	44.85'
C7	90.00'	17°14'44"	27.09'

LINE TABLE		
LINE #	BEARING	DISTANCE
L1	N89°52'15"E	12.85'
L2	N80°21'44"E	26.65'
L3	N72°25'20"E	23.38'
L4	N70°19'31"E	36.58'



SHEET INDEX



TRACT 8237

CONSISTING OF ELEVEN (11) SHEETS

BEING A RESUBDIVISION OF LOT 22 OF TRACT 8207, RECORDED IN BOOK 337 OF MAPS AT PAGES 1 THROUGH 11, RECORDED ON DECEMBER 18, 2015, OFFICIAL RECORDS OF ALAMEDA COUNTY.

LYING WITHIN THE CITY OF FREMONT, COUNTY OF ALAMEDA, STATE OF CALIFORNIA.

DATE: SEPTEMBER 2017



Civil Engineering Associates

Civil Engineers • Planners • Surveyors

2055 Gateway Place Suite 550
San Jose, CA 95110

LEGEND

- DISTINCTIVE BOUNDARY
- RIGHT OF WAY
- NEW LOT LINE
- EXISTING LOT LINE
- CENTERLINE
- MONUMENT LINE
- NEW EASEMENT LINE
- EXISTING EASEMENT LINE
- BOUNDARY TIE
- FOUND BRASS DISK IN CITY MONUMENT WELL (AS NOTED)
- SET STANDARD PUBLIC STREET MONUMENT
- STANDARD PUBLIC STREET MONUMENT, TO BE SET PER [8]
- FOUND IRON PIPE (AS NOTED)
- SET 3/4" IRON PIPE, TAGGED LS 9104
- 3/4" IRON PIPE, TO BE SET PER [8]
- (M-M) MONUMENT TO MONUMENT
- (PL-M) PROPERTY LINE TO MONUMENT
- (100.00') RECORD DATA
- (R) RADIAL BEARING
- (T) TOTAL
- SFNF SEARCHED FOR NOT FOUND
- EVAE EMERGENCY VEHICLE ACCESS EASEMENT
- FBO FOR BENEFIT OF
- PE PEDESTRIAN EASEMENT
- PIEE PRIVATE INGRESS AND EGRESS EASEMENT
- PPAE PRIVATE PEDESTRIAN ACCESS EASEMENT
- PSSE PRIVATE SANITARY SEWER EASEMENT
- PSYE PRIVATE SIDE YARD EASEMENT
- PSDE PRIVATE STORM DRAIN EASEMENT
- PUE PRIVATE UTILITY AND VEHICLE EASEMENT
- PWLE PRIVATE WATER LINE EASEMENT
- PUE PUBLIC UTILITY EASEMENT
- SSE SANITARY SEWER EASEMENT
- SDE STORM DRAIN EASEMENT
- TAE TRASH AREA EASEMENT
- UE UTILITY EASEMENT (PRIVATE)
- WLE WATER LINE EASEMENT
- SHEET COVERAGE

①

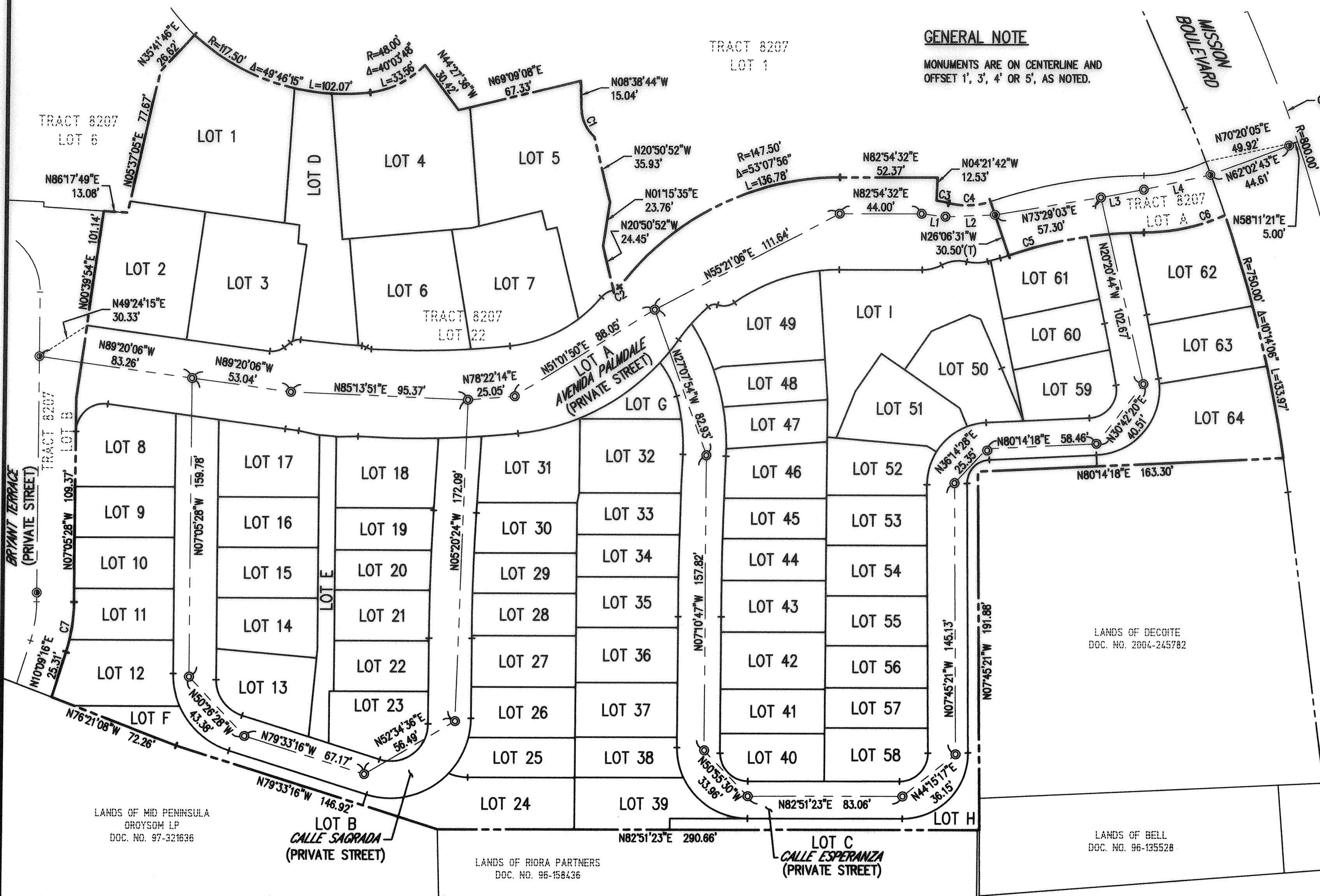
LOT 22 LOT NUMBER

NOTES

- ALL DIMENSIONS SHOWN HEREON ARE IN FEET AND DECIMALS THEREOF.
- THE AREA WITHIN THE DISTINCTIVE BORDER = 4.37 ACRES.
- SOME DIMENSIONS ARE DISPLAYED WITHOUT THE DECIMAL POINT (IE: 25') DUE TO SPACE CONSTRAINTS. ALL SUCH DIMENSION ARE ACTUALLY ACCURATE TO THE NEAREST ONE-HUNDRETH OF A FOOT (IE: 25'=25.00').

BASIS OF BEARINGS

THE BEARING, NORTH 81°09'19" EAST, ON THE CENTERLINE OF WASHINGTON BOULEVARD, BETWEEN THE FOUND MONUMENTS AT MISSION BOULEVARD AND STARR STREET, AS SAID CENTERLINE AND MONUMENTS ARE SHOWN ON THAT CERTAIN PARCEL MAP 6625, RECORDED IN BOOK 213 OF MAPS AT PAGE 45, ALAMEDA COUNTY RECORDS, WAS USED AS THE BASIS OF ALL BEARINGS SHOWN ON THIS MAP.



GENERAL NOTE

MONUMENTS ARE ON CENTERLINE AND OFFSET 1', 3', 4' OR 5', AS NOTED.

Tract Map 8237

Map 8237

pg 23